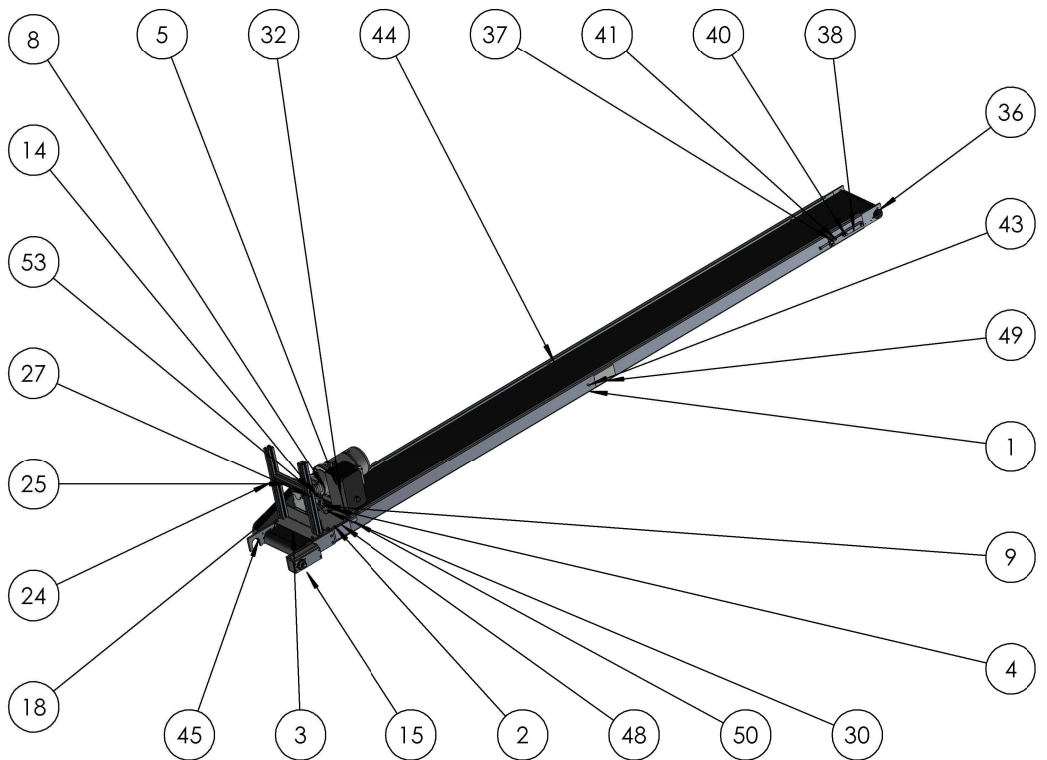



ITEM NO.	PART NUMBER	DESCRIPTION	QTY.
1	PMC3524	CONVEYOR BED, ALUM. 142" LONG	1
2	2074	PMC DRIVE NUT PLATE	2
3	2075	PMC DRIVE LEG MOUNT ANGLE, 7 GA HR STEEL, LASER CUT AND FOLDED TO PRINT	1
4	2071	PMC MOTOR MOUNT PLATE, NORD MOTOR ONLY	1
5	3301	CONTROL BOX MOUNT BRACKET, 7 GA HRPO LASER CUT STEEL, FOLDED TO PRINT	1
6	2770	5/16" SPLIT LOCK WASHER, GR 5 ZINC	24
7	2810	5/16"-18 X 3/4" HHCS, GR 5 ZINC	10
8	2070	GEARMOTOR, 1 HP, NORD	1
9	2754		4
10	2601		1
11	2707		4
12	2757	5/16"-18 HEX NUT, GR 5 ZP	8
13	PLUG IN OUTPUT SHAFT	NORD MOTOR PLUG IN OUTPUT SHAFT	1
14	OUTPUT COVER	NORD MOTOR OUTPUT COVER	1
15	11109	PMC HEAD END, DRIVE SECTION-SUBASSEMBLY	1
16	2762	1/4"-20 X 3/4" FHSCS	8
17	2771	1/4"-20 FLANGE NUT	8
18	2076	PMC CHAIN GUARD BACK, 12 GA HR STEEL, LASER CUT AND FOLDED TO PRINT	1
19	2811	#10 FLAT WASHER, SS, PLAIN	2
20	2761	10-32 X 3/8" BHSCS, SS	2
21	2012	SPROCKET, 12 T X 1" BORE	1
22	PMC3522	SPROCKET, 12 T X 3/4" BORE	1
23	2078	PMC MOTOR DRIVE CHAIN	1
24	2051 (2)	PMC DRIVE LEG, UPPER, STANDARD	2
25	2053	PMC LEG CROSS PIECE	1
26	2249	T-NUT, 5/16" SLOT SIZE, 1/4"-20 THRD	1
27	2445	PMC DRIVE LEG BRACE, 10 GA STEEL, LASER CUT AND FOLDED TO PRINT	1
28	2954	5/16"-18 X 1" CARRAIGE SCREW, GR 5 ZP	4
29	2763	5/16"-18 X 2 1/2" HHCS, GR 5 ZP	2
30	2675	1/4" FLAT WASHER, USS, ZINC	2
31	2678	1/4"-20 X 3/4" SHCS	4
32	2063	CONVEYOR CONTROL UNIT, AC WIRED, SET UP, AND CONFIGURED	1
33	2605	1/4" SPLIT LOCK WASHER, STEEL, ZINC	2
34	2024	MACHINE KEY, 3/16" X 3/4", STEEL	1
35	5098	1/4" X 1" SQ KEY	1
36	11107	PMC TAIL SECTION SUB-ASSEMBLY	1
37	PMC3531	BELT TENSIONER SCREW NUT, 3/4" SQ ALUM	2
38	PMC3532	BELT TENSIONER LOCK, 3/4" SQ ALUM.	2
39	2602	5/16"-18 FLANGE NUT, ZINC	8
40	2609	5/16"-18 X 1 1/2" HHCS, GR 5 STEEL ZINC	8
41	2029	3/8"-16 X 4" HHCS, FULL THREAD, GR 5 ZP	2
42	2755	3/8"-16 HEX NUT, GR 5, ZINC	2
43	2079	IDLER ROLLER, 12" WIDE BED	1
44	PMC3525	CONVEYOR BELT, PMC 12.5' CONVEYOR	1
45	2077	CHAIN GUARD, PMC DRIVE, OUTSIDE COVER	1
46	2930		3
47	2000	DECAL, WARNING, PINCH POINT/GEAR DANGER	1
48	2201	DECAL-RAPID VEYOR LOGO	1
49	2206	DECAL, CONVEYOR SAFETY	2
50	3544	EQUIPMENT SERIAL NUMBER TAG	1
51	2041-CUT	UHMW TAPE 141" LONG CUT LENGTH	1
52	2754	CARRAIGE SCREW, 1/4"-20 X 1 1/2"	1
53	2707	5/16" FLAT WASHER, USS, ZP	2

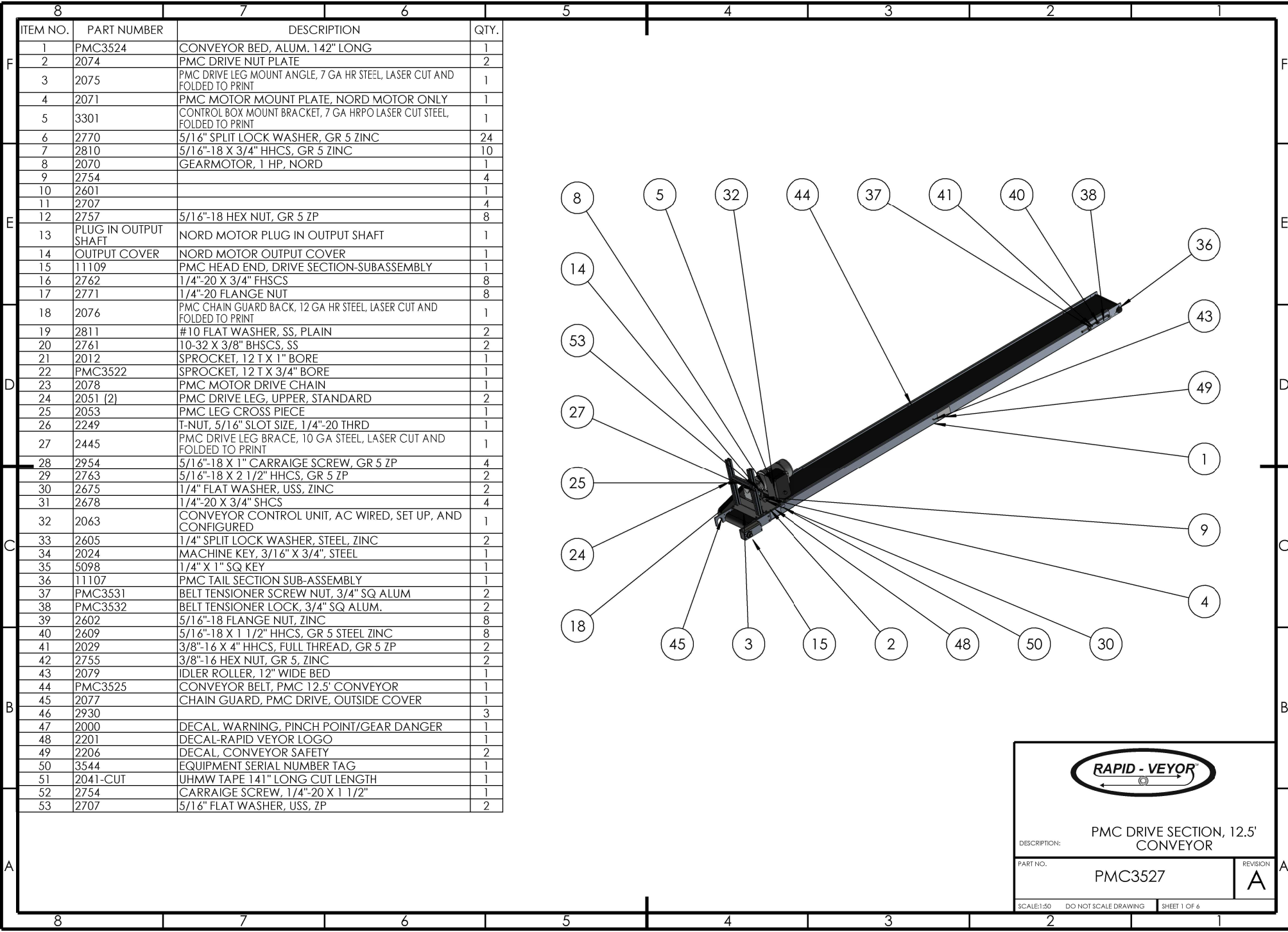




DESCRIPTION: PMC DRIVE SECTION, 12.5' CONVEYOR

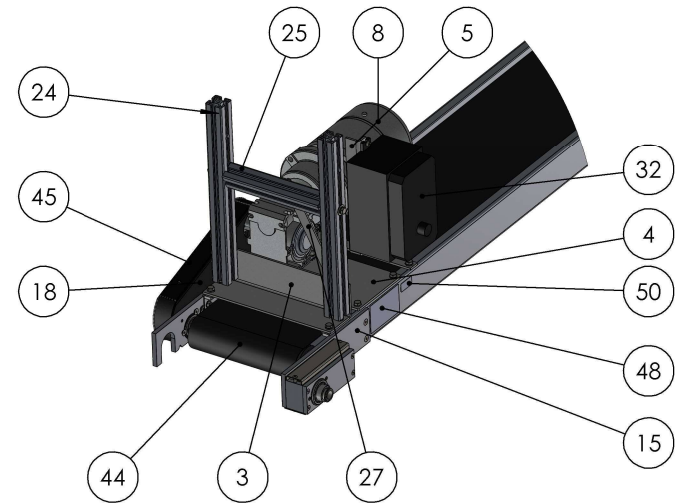
PART NO. PMC3527	REVISION A
------------------	------------

SCALE: 1:50 DO NOT SCALE DRAWING SHEET 1 OF 6





ITEM NO.	PART NUMBER	Description	QTY.
3	2075	PMC DRIVE LEG MOUNT ANGLE, 7 GA HR STEEL, LASER CUT AND FOLDED TO PRINT	1
4	2071	PMC Motor Mount Plate, Nord Motor Only	1
5	3301	CONTROL BOX MOUNT BRACKET, 7 GA HRPO LASER CUT STEEL, FOLDED TO PRINT	1
8	2070	GEARMOTOR, 1 HP, NORD	1
15	11109	PMC HEAD END, DRIVE SECTION-SUBASSEMBLY	1
18	2076	PMC CHAIN GUARD BACK, 12 GA HR STEEL, LASER CUT AND FOLDED TO PRINT	1
24	2051 (2)	PMC DRIVE LEG, UPPER, STANDARD	2
25	2053	PMC LEG CROSS PIECE	1
27	2445	PMC DRIVE LEG BRACE, 10 GA STEEL, LASER CUT AND FOLDED TO PRINT	1
32	2063	Conveyor Control Unit, AC wired, set up, and configured	1
44	PMC3525	CONVEYOR BELT, PMC 12.5' CONVEYOR	1
45	2077	CHAIN GUARD, PMC DRIVE, OUTSIDE COVER	1
47	2000	DECAL, WARNING, PINCH POINT/GEAR DANGER	1
48	2201	DECAL-RAPID VEYOR LOGO	1
50	3544	EQUIPMENT SERIAL NUMBER TAG	1



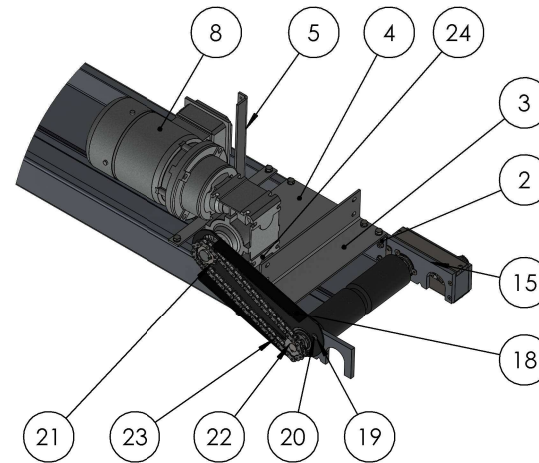
PMC HEAD END
DRIVE (MOTOR) SECTION

SCALE 1 : 10



PMC DRIVE SECTION
HEAD END
(shown partially disassembled)

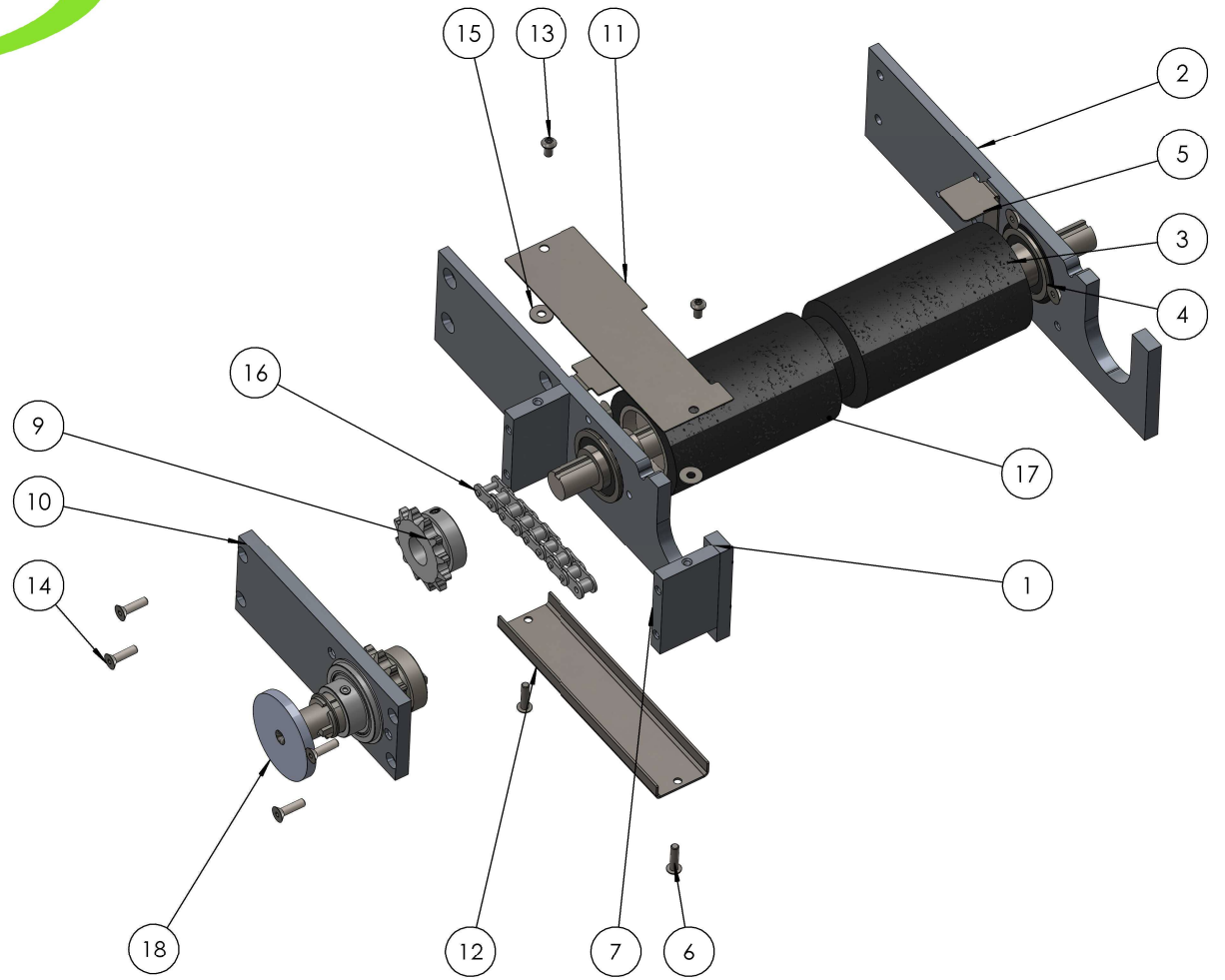
SCALE 1 : 10



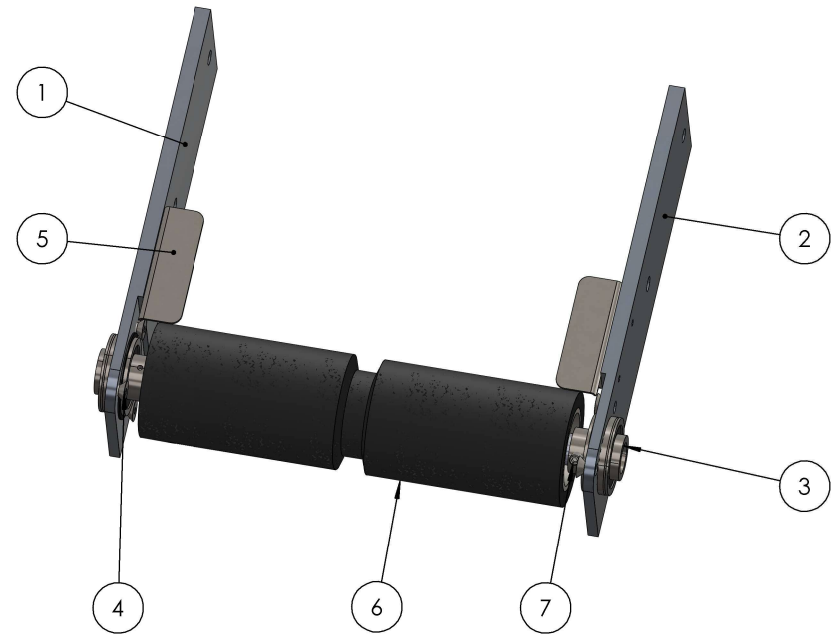
ITEM NO.	PART NUMBER	Description	STEP 7/QTY.
2	2074	PMC DRIVE NUT PLATE	2
3	2075	PMC DRIVE LEG MOUNT ANGLE, 7 GA HR STEEL, LASER CUT AND FOLDED TO PRINT	1
4	2071	PMC Motor Mount Plate, Nord Motor Only	1
5	3301	CONTROL BOX MOUNT BRACKET, 7 GA HRPO LASER CUT STEEL, FOLDED TO PRINT	1
8	2070	GEARMOTOR, 1 HP, NORD	1
15	11109	PMC HEAD END, DRIVE SECTION-SUBASSEMBLY	1
18	2076	PMC CHAIN GUARD BACK, 12 GA HR STEEL, LASER CUT AND FOLDED TO PRINT	1
19	2811	#10 FLAT WASHER, SS, PLAIN	2
20	2761	10-32 X 3/8" BHSCS, SS	2
21	2012	SPROCKET, 12 T X 1" BORE	1
22	PMC3522	SPROCKET, 12 T X 3/4" BORE	1
23	2078	PMC MOTOR DRIVE CHAIN	1
24	2754	Carraige Screw, 1/4"-20 x 1 1/2"	1



ITEM NO.	PART NUMBER	Description	QTY.
1	PMC3514	PMC HEAD PLATE, LEFT HAND SIDE	1
2	PMC3533	HEAD PLATE, DRIVE SECTION, CHAIN GUARD SIDE	1
3	PMC3502	3/4" bore bearing	2
4	2672	1/4"-20 x 3/8" FHSCS, SS	6
5	3267	PINCH GUARD, PMC HEAD END, 18 GA SS	2
6	5195	10-32 X 3/4" BHSCS, SS	4
7	PMC3520	TRANSMISSION BOX END, 3/8" X 2 1/2" ALUM	2
8	2024	MACHINE KEY, 3/16" X 3/4", STEEL	2
9	PMC3522	SPROCKET, 12 T X 3/4" BORE	1
10	PMC022	TRANSMISSION OUTER PLATE ASSEMBLY	1
11	PMC3518	TRANSMISSION BOX TOP COVER PLATE	1
12	3222	PMC TRANSMISSION BOX BOTTOM GUARD, 16 GA SS	1
13	2761	10-32 X 3/8" BHSCS, SS	4
14	2760	10-32 X 3/4" FHSCS, SS	6
15	2811	#10 FLAT WASHER, SS, PLAIN	2
16	CH0054	TRANSMISSION CHAIN	1
17	PMC3508	PULLY ASSEMBLY HEAD DRIVE	1
18	PMC3512	ENGAGEMENT PIN	1

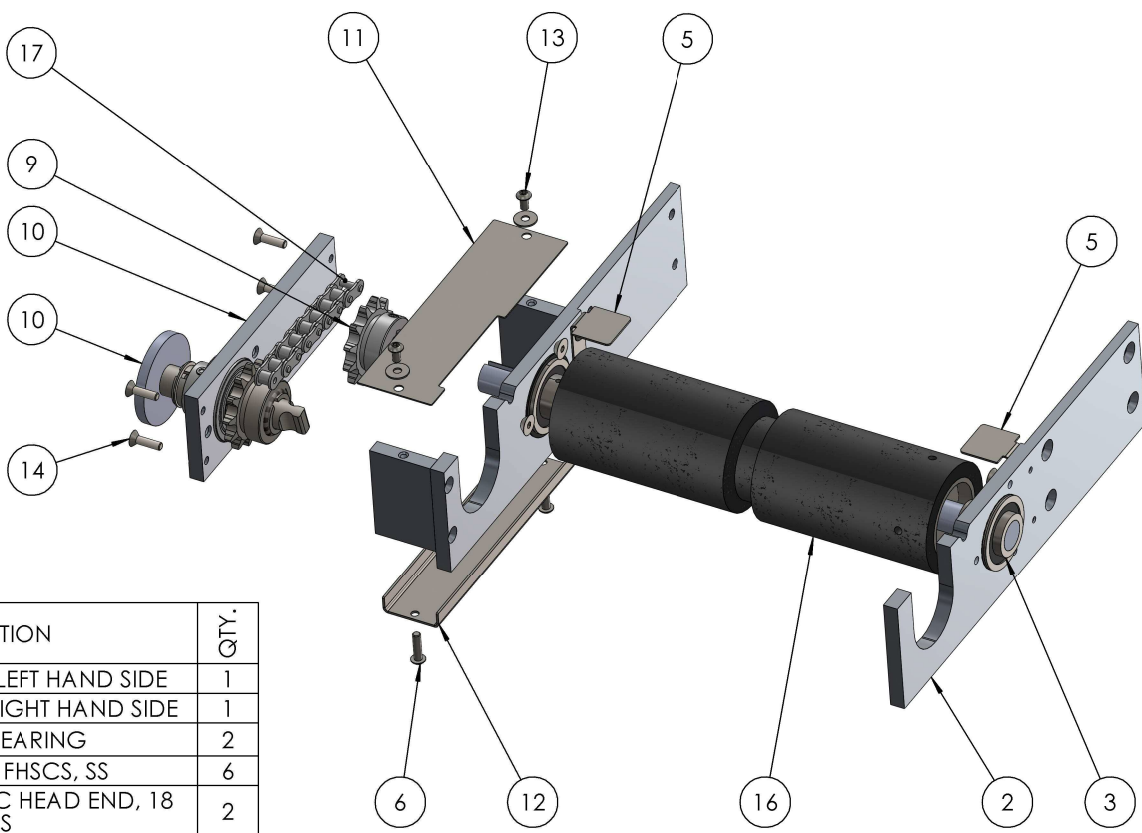


PMC HEAD END-DRIVE SECTION
SUB-ASSEMBLY
COMPLETE PART NO. 11109



PMC TAIL END SUB-ASSEMBLY
COMPLETE PART NO. 11107

ITEM NO.	PART NUMBER	Description	QTY.
1	PMC3516	PMC TAIL PLATE, LEFT SIDE, 3/8" X 3" ALUM	1
2	PMC3517	PMC TAIL PLATE, LEFT, 3/8" X 3" ALUM	1
3	PMC3502	3/4" bore bearing	2
4	2672	1/4"-20 x 3/8" FHSCS, SS	6
5	3268	PINCH GUARD, PMC TAIL, 18 GA SS, LASER CUT AND FOLDED TO PRINT	2
6	PMC3507	PULLY ASSEMBLY TAIL	1
7	2674	1/4"-28 x 1/2" SET SCREW, HEX SOCKET, CUP POINT, SS	1



ITEM NO.	PART NUMBER	DESCRIPTION	QTY.
1	PMC3514	PMC HEAD PLATE, LEFT HAND SIDE	1
2	PMC3515	PMC HEAD PLATE, RIGHT HAND SIDE	1
3	PMC3502	3/4" BORE BEARING	2
4	2672	1/4"-20 X 3/8" FHSCS, SS	6
5	3267	PINCH GUARD, PMC HEAD END, 18 GA SS	2
6	5195	10-32 X 3/4" BHSCS, SS	4
7	PMC3520	TRANSMISSION BOX END, 3/8" X 2 1/2" ALUM	2
8	2024	MACHINE KEY, 3/16" X 3/4", STEEL	2
9	PMC3522	SPROCKET, 12 T X 3/4" BORE	1
10	PMC022	TRANSMISSION OUTER PLATE ASSEMBLY	1
11	PMC3518	TRANSMISSION BOX TOP COVER PLATE	1
12	3222	PMC TRANSMISSION BOX BOTTOM GUARD, 16 GA SS	1
13	2761	10-32 X 3/8" BHSCS, SS	4
14	2760	10-32 X 3/4" FHSCS, SS	4
15	2811	#10 FLAT WASHER, SS, PLAIN	2
16	PMC3509	PULLEY ASSEMBLY SLAVE HEAD	1
17	CH0054	TRANSMISSION CHAIN	1

PMC SLAVE HEAD SUB-ASSEMBLY
COMPLETE PART NO. 11106